

**NARENDRA INFRA BUILDTECH LLP**

PRESENTS

**NARENDRA**  
TOWN SQUARE



MADE BY:  **SHIVALIK**  
GROUP

DEVELOPER OF

**Advitya** **Advitya** **Agman** **Agman 2**  
HEIGHTS HOMES



---

Shri Narendra Aggarwal was a man of few words but great repute, inspiring young business minds across the nation. Known for his foresighted nature, philanthropy, and unique ability to turn ideas into reality, he received the 3rd position by the Apparel Export Promotion Council (AEPC), Government of India, in December 2017. Embracing the challenge to fundamentally shift organizational perspectives on human resources, he advocated for back-to-basics people empowerment and led from the heart. His rich experience, particularly in CSR engagements, played a crucial role in this transformation.

Under his leadership, the Shivalik Group thrived, focusing on creating a sustainable impact through synthesizing people power. The Shivalik Group has earned a stellar reputation in the textile industry, both nationally and internationally, for high-quality products and timely deliveries. We are committed to continuing Shri Narendra Aggarwal ji's legacy with this new venture Narendra Town Square. He led a successful, multi-disciplinary team that excelled in high-pressure environments and extended his commitment beyond business to community development, ensuring outstanding CSR services. Aggarwal's mentorship and vision have touched millions of lives through ventures such as SPL Industries Limited, Faridabad; Agrasain Spaces LLP; Sumanglam Footwear Pvt Ltd.; and Delhi Public School. Notably, he successfully delivered significant projects like Advitya Homes, Aagman 1, and Aagman 2. His leadership ensured that the Shivalik Group became a symbol of success and sustainability in the industry.

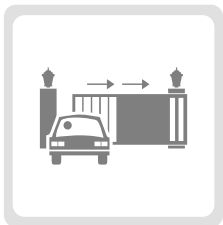
---

Late Sh. Narendra Aggarwal

# PLOT YOUR PERFECT FUTURE

Welcome to Narendra Infra Buildtech LLP, a distinguished division of the esteemed Shivalik Group. We are delighted to introduce Narendra Township, an exquisite residential development encompassing 13.23 acres in the serene village of Prithla, Sector 6. This premier project, developed under the prestigious Deen Dayal Jan Awas Yojana (DDJAY-2016), is a testament to our dedication to providing luxurious yet affordable housing solutions that enhance the quality of life for our residents. Narendra Infra Buildtech LLP is synonymous with excellence, innovation, and unparalleled customer satisfaction. Our team of experts is devoted to delivering projects that reflect the highest standards of quality and architectural finesse. Narendra Township offers an unparalleled blend of contemporary amenities and natural tranquility, making it the perfect haven for those seeking a refined and serene lifestyle.

## JOIN US IN THIS EXCEPTIONAL COMMUNITY AND EXPERIENCE THE EPITOME OF



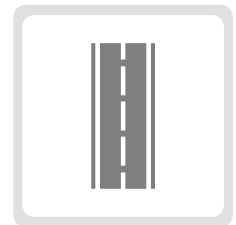
Gated Community



Free Hold Plot  
Registry



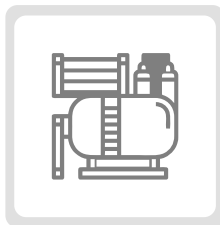
Bigger Plot  
Sizes 120-175 sq/yard



Wider Entrance  
Road of 12 Meter



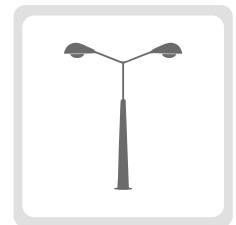
Pollution  
Free Environment



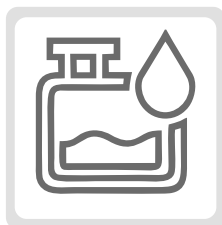
STP & WTP



Pollution  
Free Environment



Led Street Light  
in Common Areas



Underground Water Tank  
for Water Storage



Upcoming  
Commercial Complex



Vastu Compliant



Sales Team @ 7071-803-803

# 13 ACRES

## OF GREEN LIVING & PREMIER AMENITIES



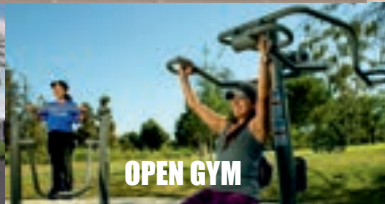
**BIG COMMUNITY SPACE 5600 SQM (APPROX)**



**SWIMMING POOL**



**GATED COLONY WITH SECURITY**



**OPEN GYM**



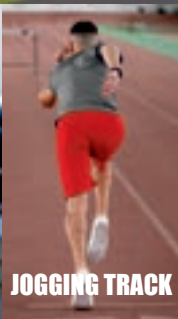
**PARKS  
10500 SQM (APPROX)**



**CRICKET BOX**



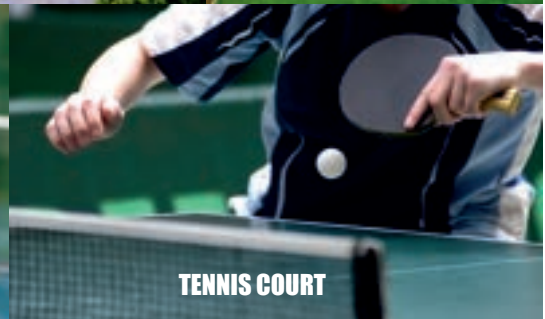
**24x7 CCTV**



**JOGGING TRACK**



**BADMINTON COURT**



**TENNIS COURT**

# SITE MAP



Sales Team ■ 7071-803-803

**PRICE - 42900/- PER SQUARE YARD**

## PAYMENT PLAN

<b>Booking Amount</b>	<b>10%</b>	<b>Cheque</b>
<b>Within 45 Days of Booking</b>	<b>25%</b>	
<b>Within 4 Months of Booking</b>	<b>20%</b>	
<b>Within 8 Months of Booking</b>	<b>20%</b>	
<b>At the time of Possession</b>	<b>25%</b>	<b>Plus Possession &amp; Registeration Charges</b>

\*Registration Stamp Duty, GST Charges and Possession Charges or any other legal charges levied by Government Shall be payable by Allotee / Applicant as per norms.



# LOCATION MAP



### IGI Airport

50 Min Drive

### Jewar International Airport

30 Min Drive



### KMP Expressway

15 Min Drive

### Mumbai Expressway

05 Min Drive



### Gurugram

30 Min Drive



### Sarvodaya Hospital

15 Min Drive

### Amrita Hospital

25 Min Drive



### IMT Faridabad

15 Min Drive

### Prithla Industrial Area

01 Min Drive



### Noida

25 Min Drive



### DPS School

07 Min Drive

### Manav Rachna University

15 Min Drive



### Pebble Downtown Mall

10 Min Drive

### World Street Mall

15 Min Drive



### Greater Noida

35 Min Drive



### Palwal

15 Min Drive

### Delhi Border Toll

25 Min Drive



### Ballabhgarh Metro Bus Stand Railway Station

10 Min Drive



### Aashram

35 Min Drive



Sales Team 7071-803-803

## NARENDRA TOWN SQUARE

HRERA-PKL-PWL-601-2024 | License No 45 of 2024, Dated:- 13-03-2024

Narendra Town Square, Sector-6, Village-Prithla, South Faridabad, Haryana (INDIA)

[www.narendratownsquare.com](http://www.narendratownsquare.com)